

New Jersey Offshore Wind State Update



Anne Marie Mcshea

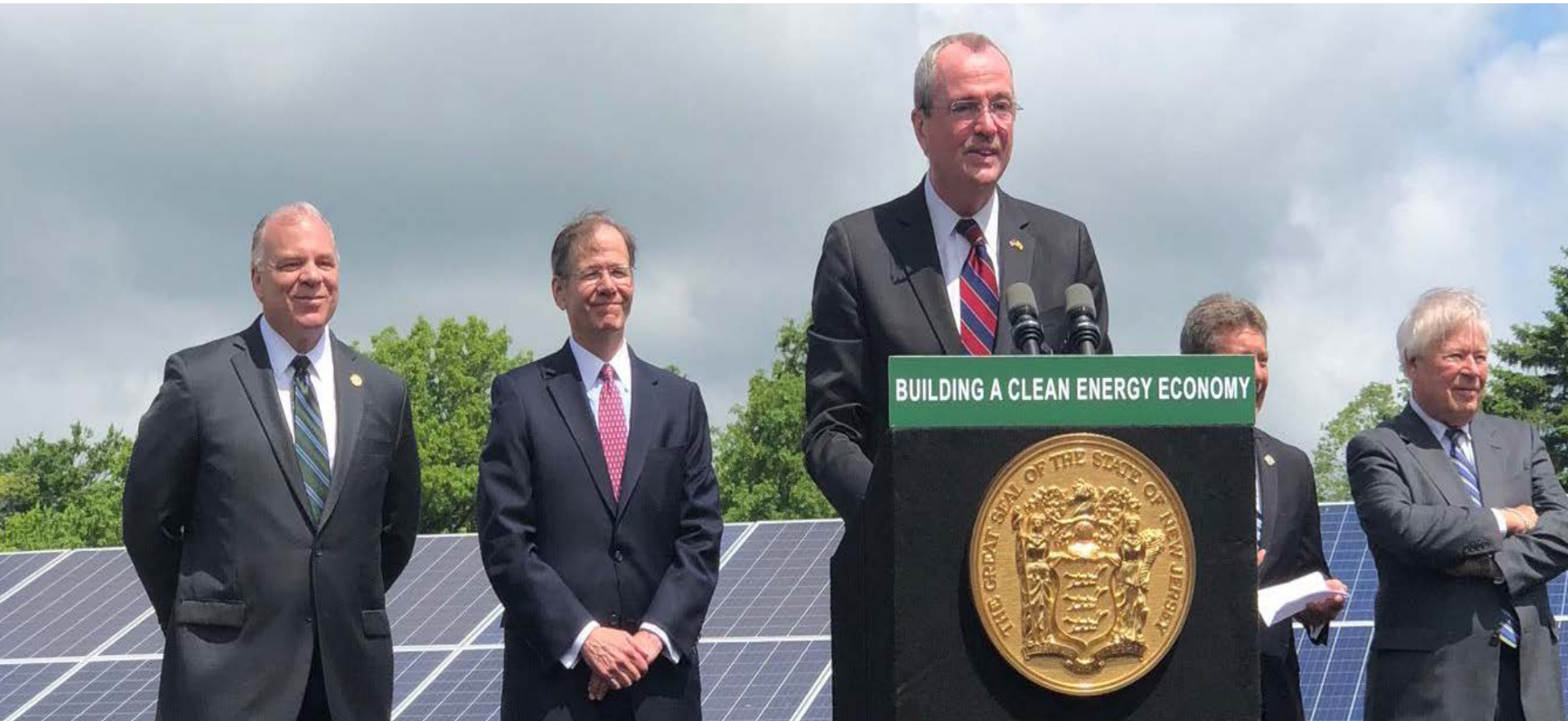
NJ BPU Offshore Wind Program Administrator

BNOW State of the States for Offshore Wind

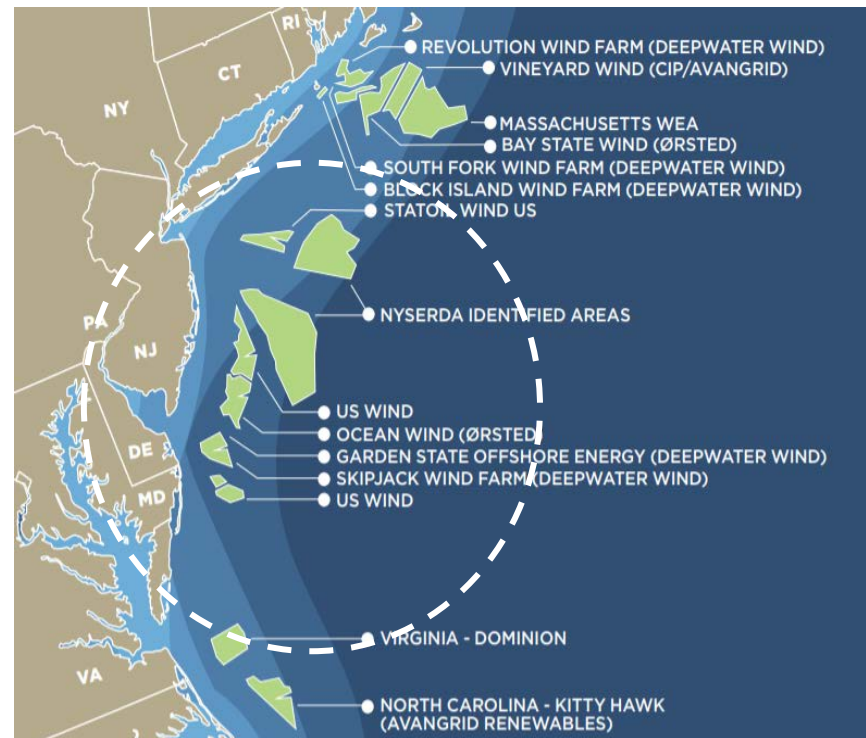
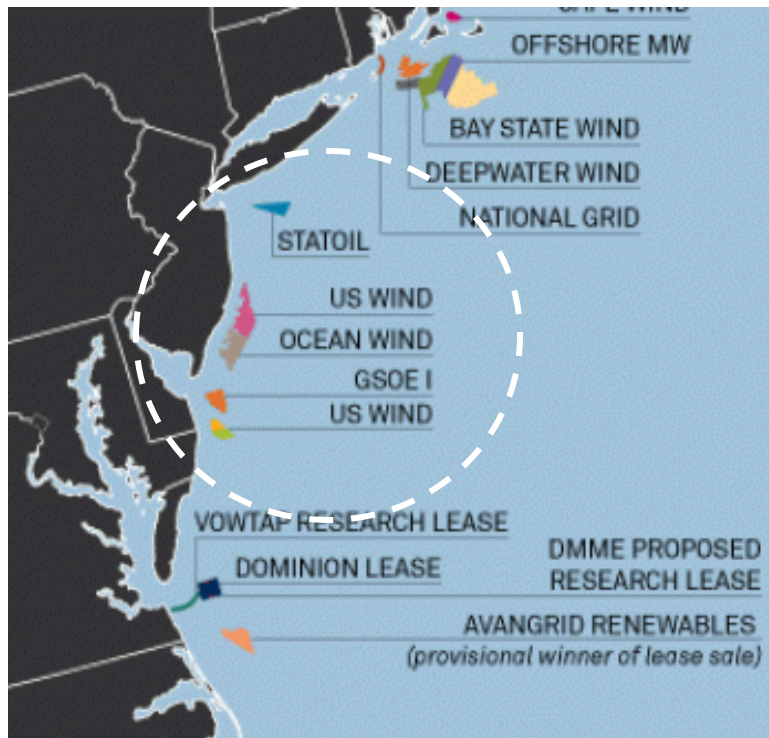
January 25, 2019



New Jersey is committed to 3,500 MW by 2030 – one of the largest commitments to date in the US.



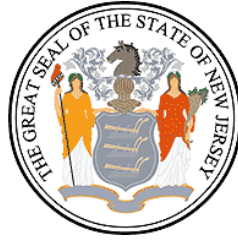
New Jersey offers access to the largest and most competitive offshore wind lease area in the U.S.



Existing Federal Lease Areas: Equinor, US Wind, Orsted and GSOE I (>500,00 Acres) 5GW *

Existing Federal Lease Plus Proposed WEAs Hudson North And Hudson South (est 800,000 Acres) 8GW*

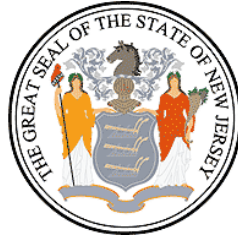
New Jersey's Offshore Wind Strategic Plan will establish a Roadmap for Success in realizing 3,500 MWs and opportunities for regional collaboration.



Offshore Wind Strategic Plan:

The Offshore Wind Strategic Plan shall focus on critical components of offshore wind development, including achieving scale to reduce costs, job growth, supply-chain businesses, workforce development, data collection, and appropriate siting of facilities, and shall ensure that natural resources are protected throughout the development and operational stages of offshore wind energy production.

(Executive Order No. 8)



New Jersey Offshore Wind Solicitation Schedule:

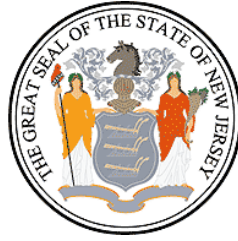
- **Round 1:** **1,100 MWs OREC Application Window Open by 2018**
Decision by July 2019 – COD / Operational by 2024

- **Round 2*:** **1,200 MWs OREC Application Window Open by 2020**
Decision by July 2021 - COD / Operational by 2026

- **Round 3*:** **1,200 MWs OREC Application Window Open by 2022**
Decision by July 2023 - COD / Operational by 2028

3,500 MWs of Installed Offshore Wind Capacity by 2030

*As Called for Governor Murphy on September 13, 2018. To be considered by the New Jersey Board of Public Utilities.



New Jersey Offshore Wind Solicitation for 1,100 MW:

- Consistent with OWEDA and Executive Order No. 8
- Application Window Closed: December 28, 2018
- Bid Responses received from Orsted, Equinor and EDF-Shell
- 300 MW – 1,100 MW Bid Size
- 400 MW Mandatory Bid
- Multiple Bids per OSW Developer
- Environmental Protection Plan and Economic Development Plan required
- Net Economic and Environmental Benefits Required (OWEDA)
- The Board has 180 Days from the date of submission of a Complete Application to review and make a final decision.



New Jersey Offshore Wind Solicitation for 1,100 MW:

Six primary criteria:

- 1) OREC purchase price
- 2) economic impacts for the state
- 3) ratepayer impacts
- 4) environmental impacts
- 5) strength of the guarantees of economic impacts
- 6) likelihood of successful commercial completion

**Ultimately, we want to encourage not just the lowest cost
but the best value for New Jersey.**



New Jersey Department of Labor & Workforce Development (LWD)

Industry Partnerships Program - an employer driven system that is designed to help businesses solve issues common within their industry sector. LWD has dedicated a team in this initiative for Energy/Offshore Wind.

Some of the goals of this program is to assist with:

- Career pathway training
- Education/training
- Linking the career seeker with the employer
- Increase the potential earnings for both the career seeker and employer(s)

LWD recently announced NJ Apprenticeship Network to focuses on clean energy and utilities. This program creates formal linkages to employers, secondary and higher education systems so more New Jerseyans receive opportunities in career pathways with upward mobility and sustainable wages.

Thank You !

Anne Marie McShea

Offshore Wind Program Administrator, BPU

anne.mcshea@bpu.nj.gov

609-777-3308

